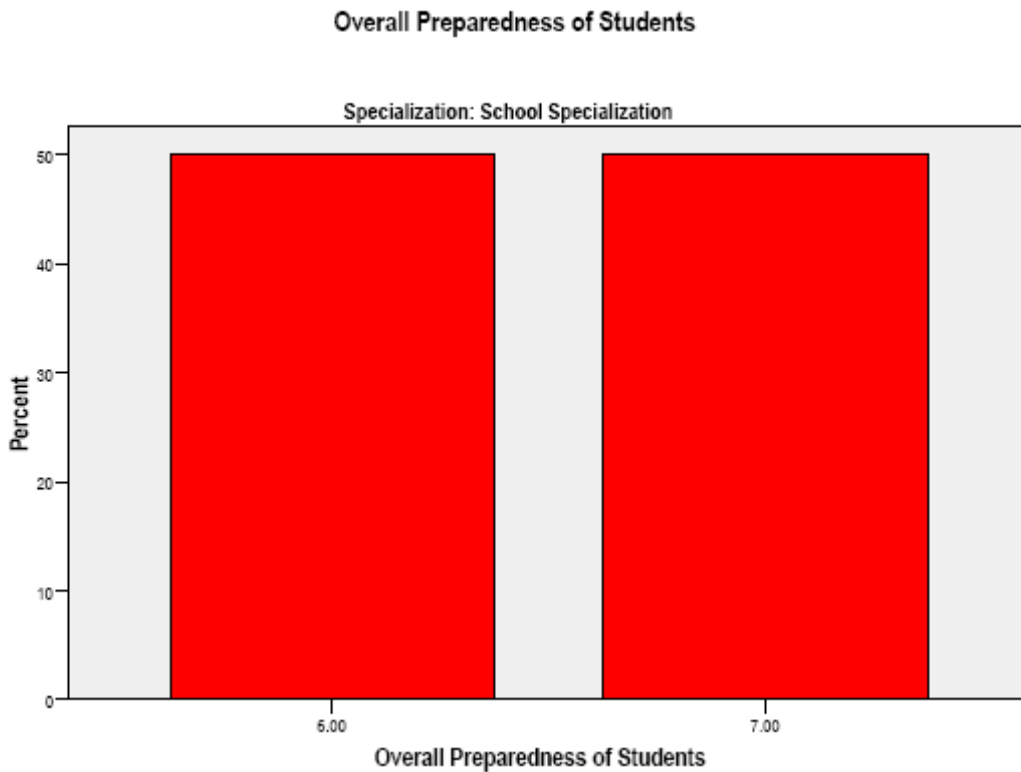


Field Study Supervisor Evaluations of the Program
School Specialization

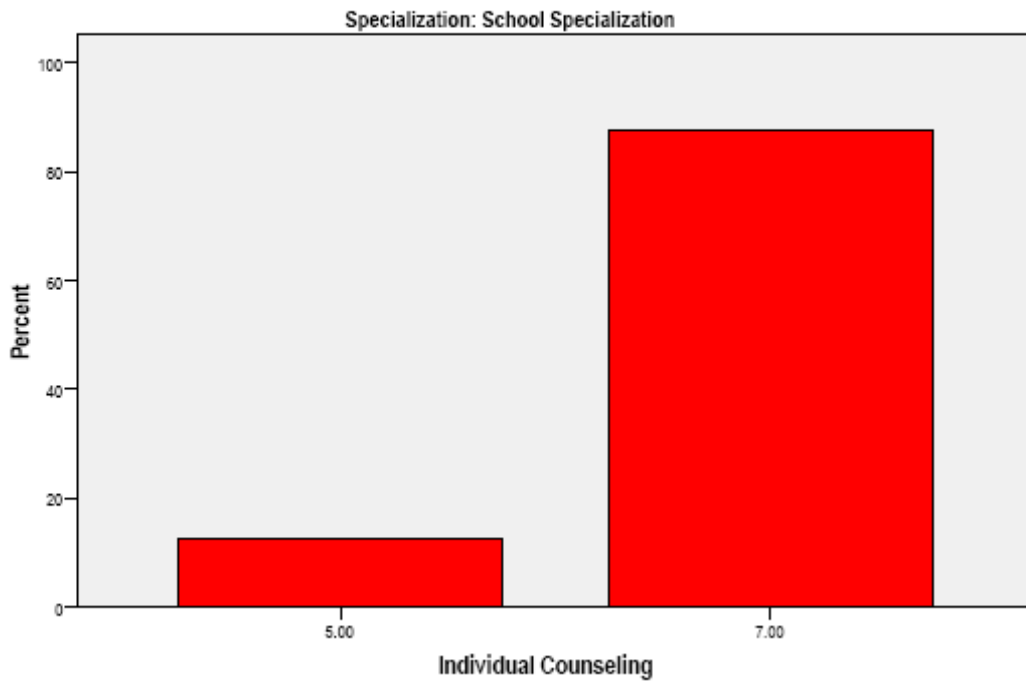
Between 2005 and 2007 Field Study Supervisor were asked to rate the overall training of the training in addition to appraisals of the skills of each student under their supervision. This overall programmatic appraisal was conducted during Supervisor training sessions and the Annual “*Field Study Fiesta.*”

The following data reflect the Field Study Supervisor (n=8) ratings of the program.

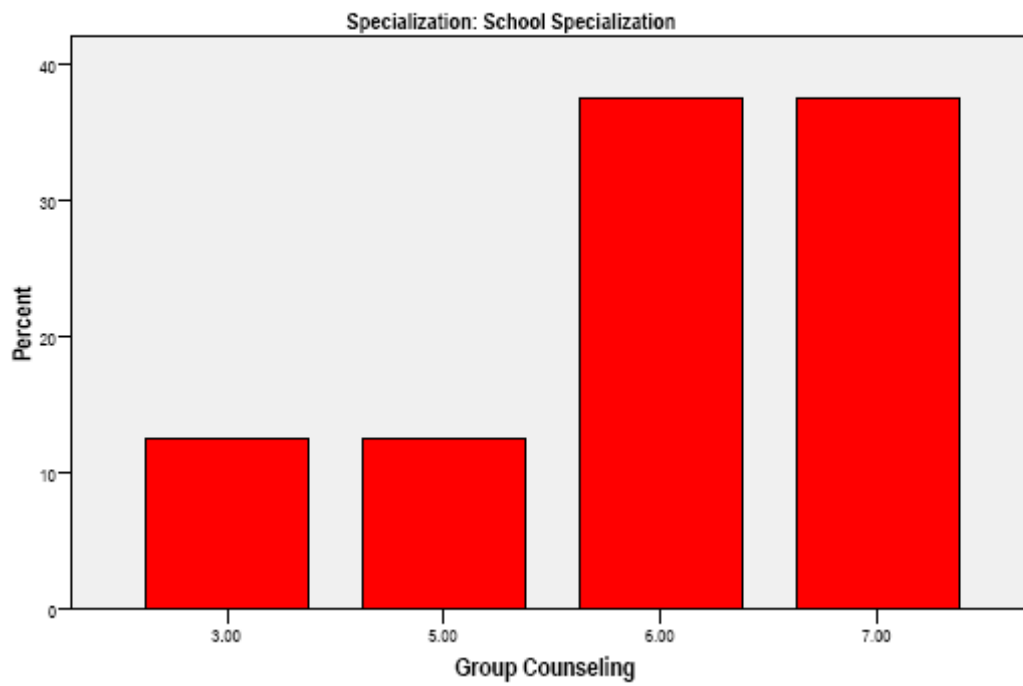
**All data were on a 1-8 Likert scale where 1 = “VERY POOR” to 7 = “EXCELLENT.”
An 8 indicates “NOT APPLICABLE.”**



Individual Counseling



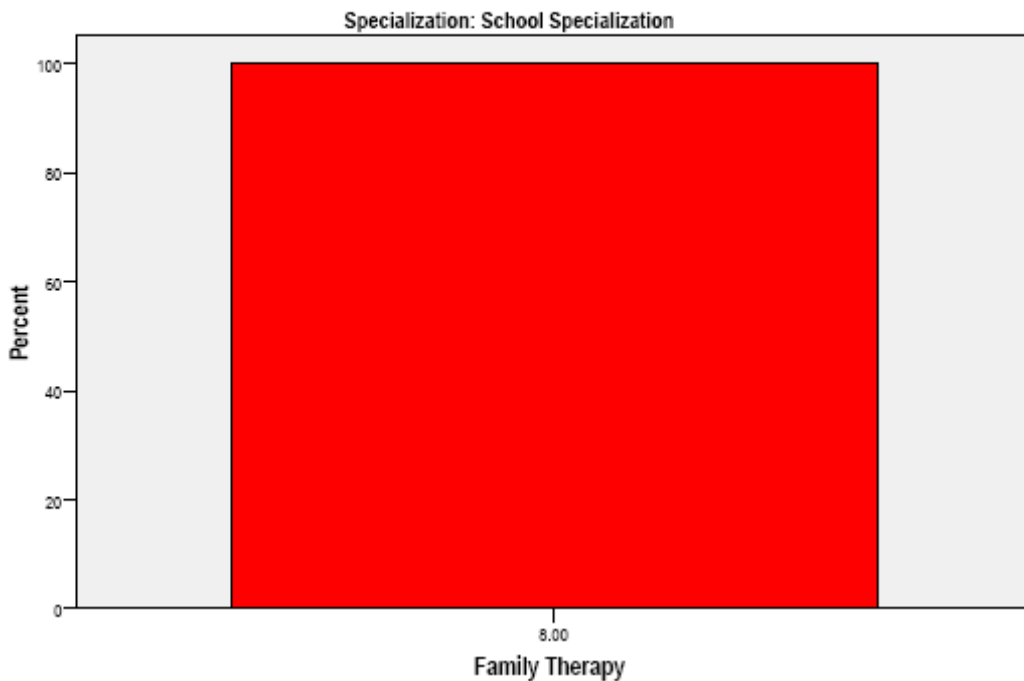
Group Counseling



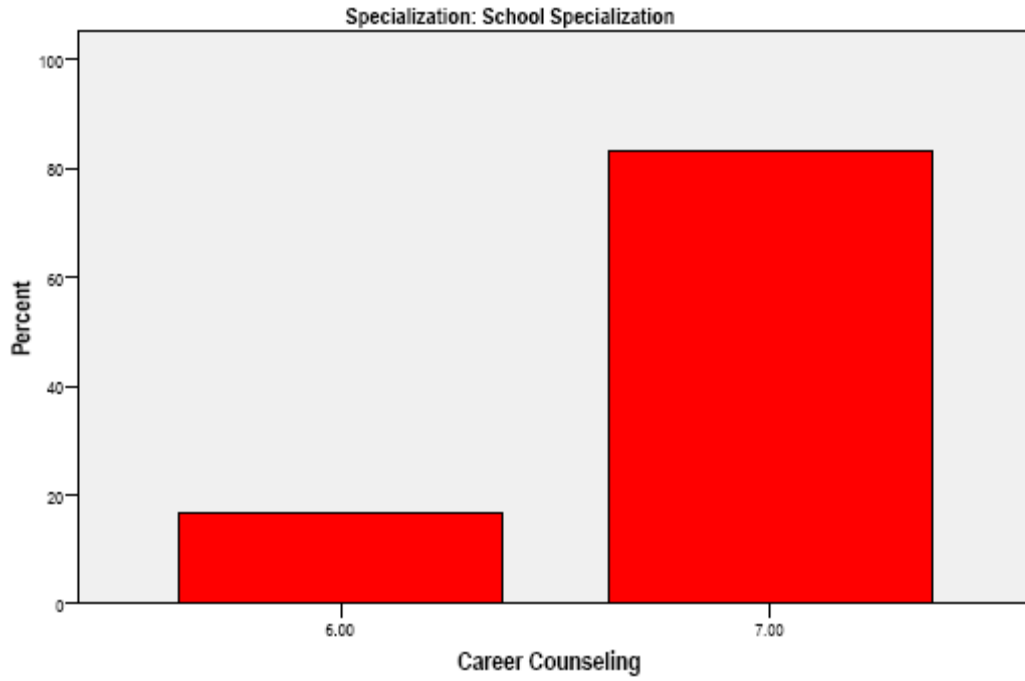
Marriage Counseling



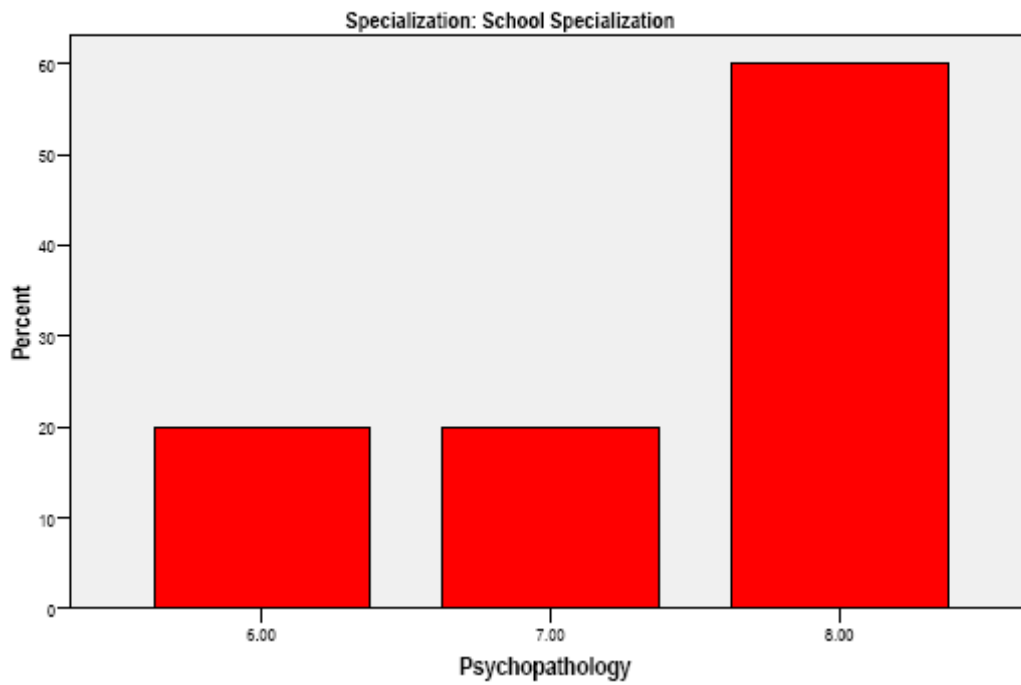
Family Therapy



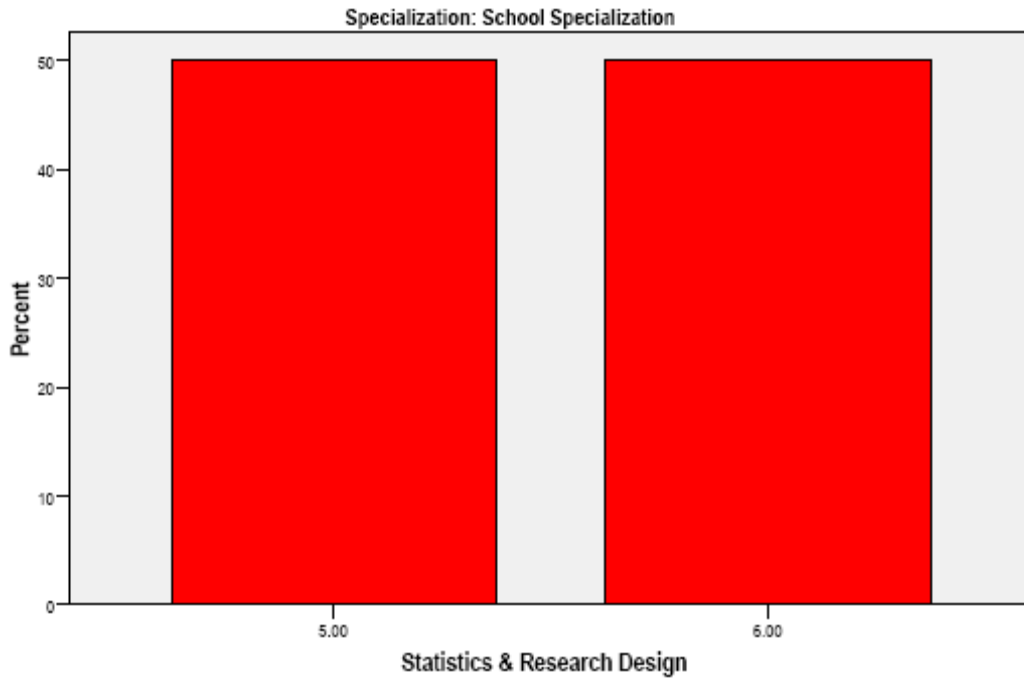
Career Counseling



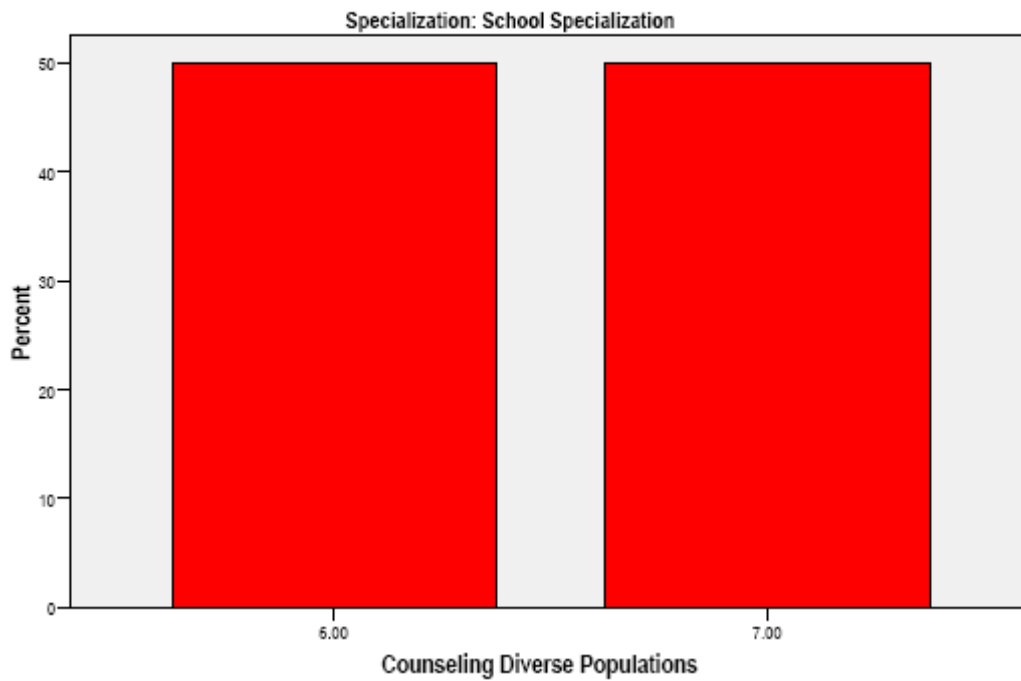
Psychopathology



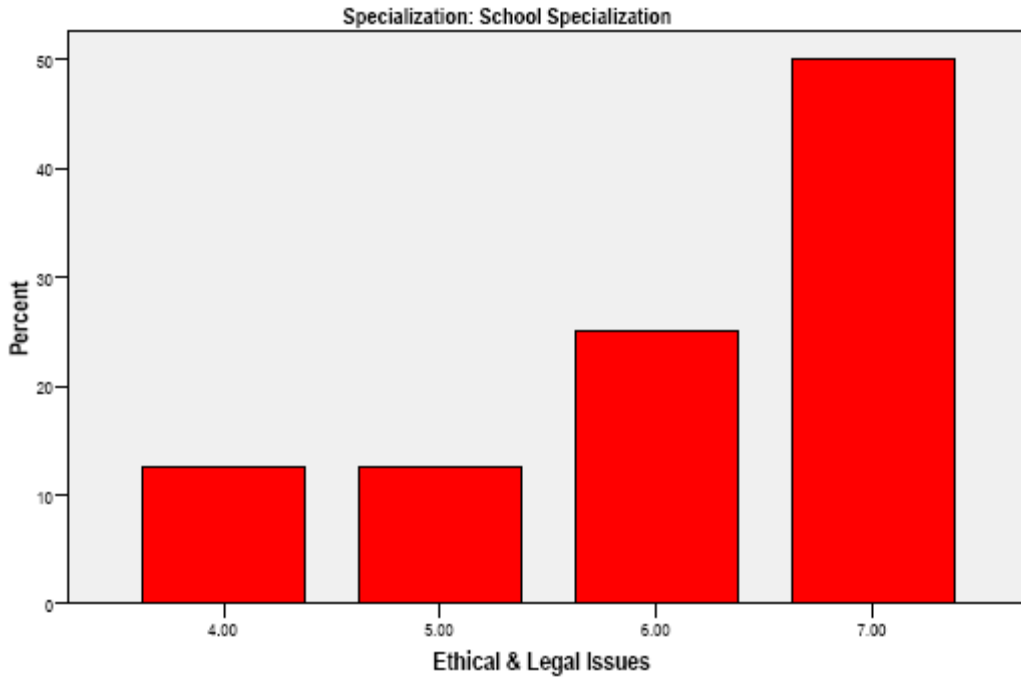
Statistics & Research Design



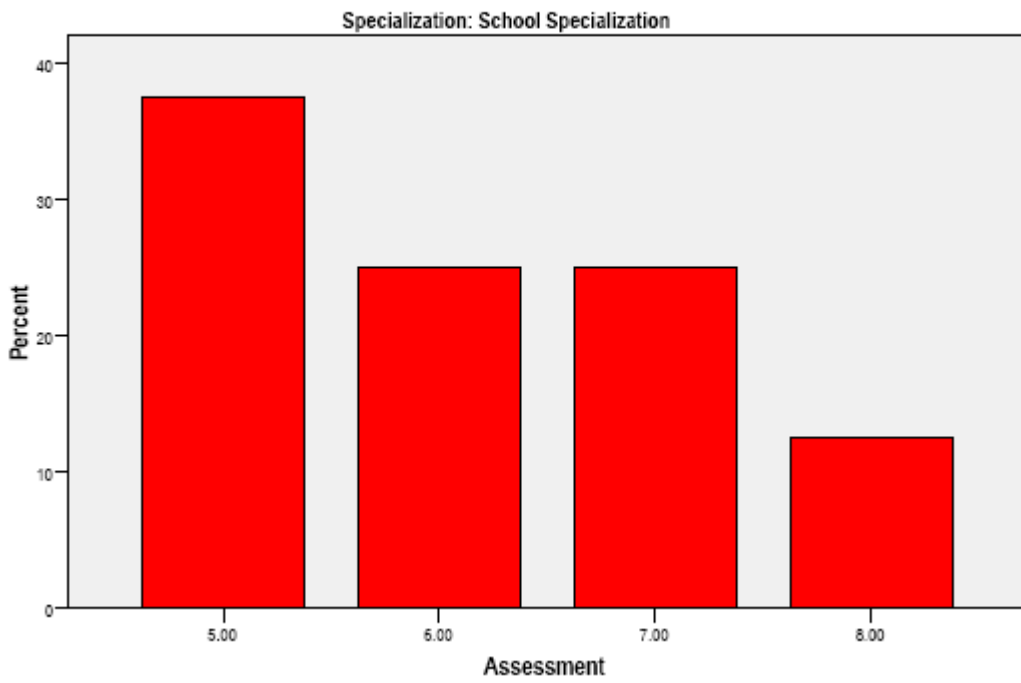
Counseling Diverse Populations



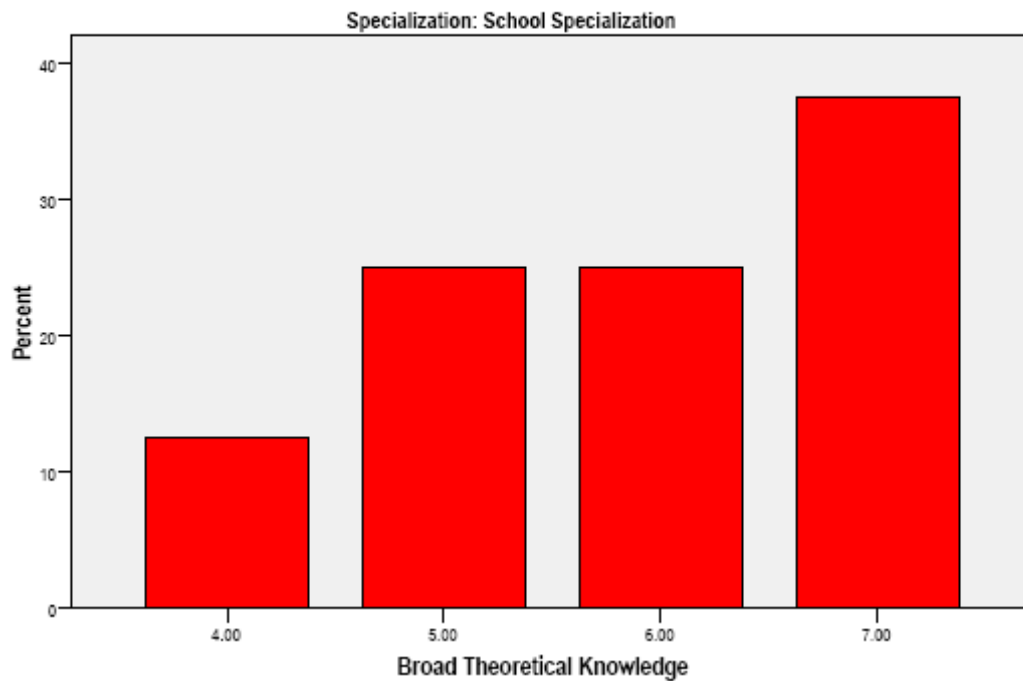
Ethical & Legal Issues



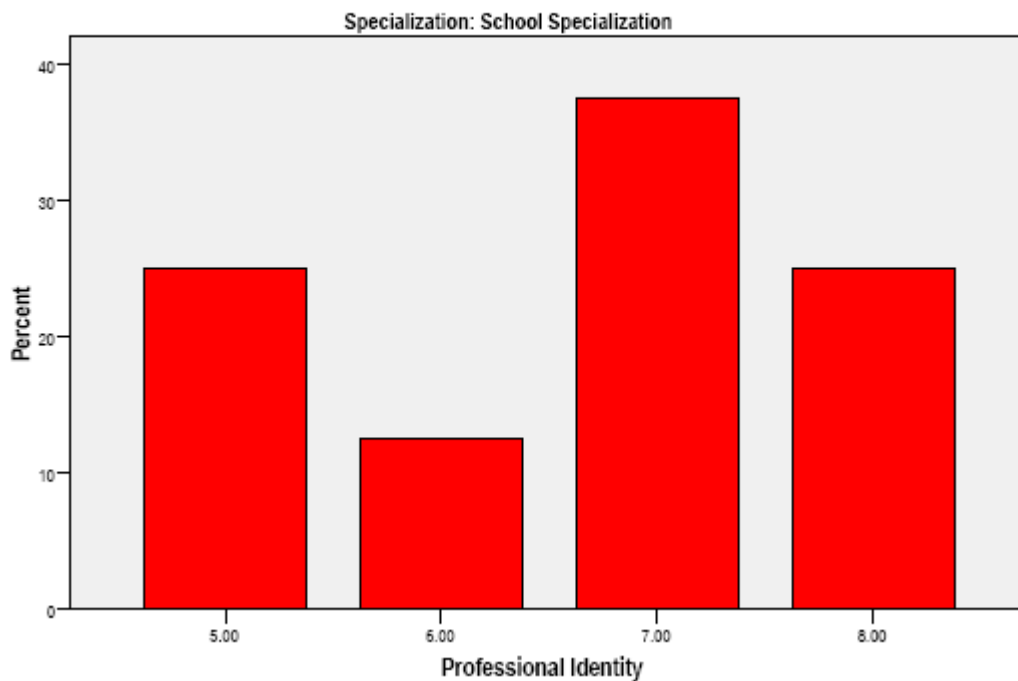
Assessment



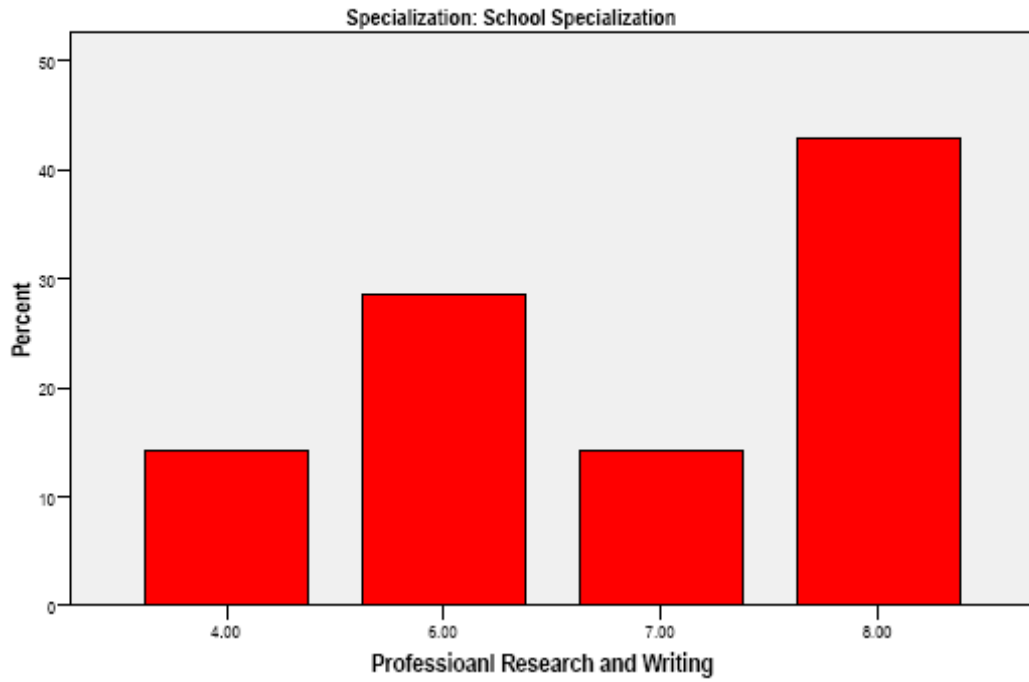
Broad Theoretical Knowledge



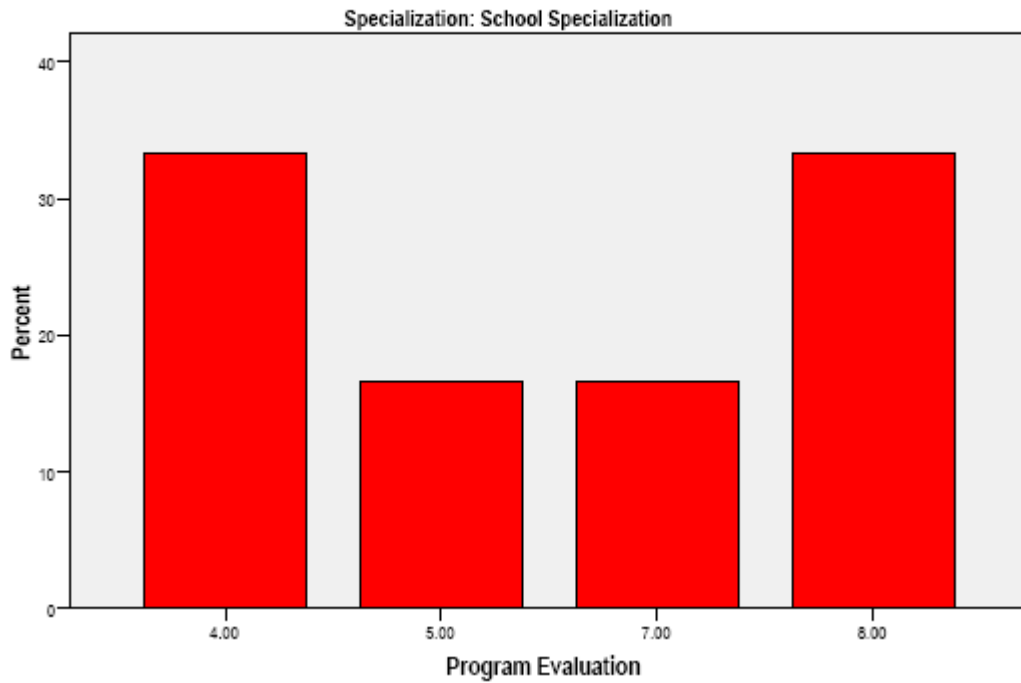
Professional Identity



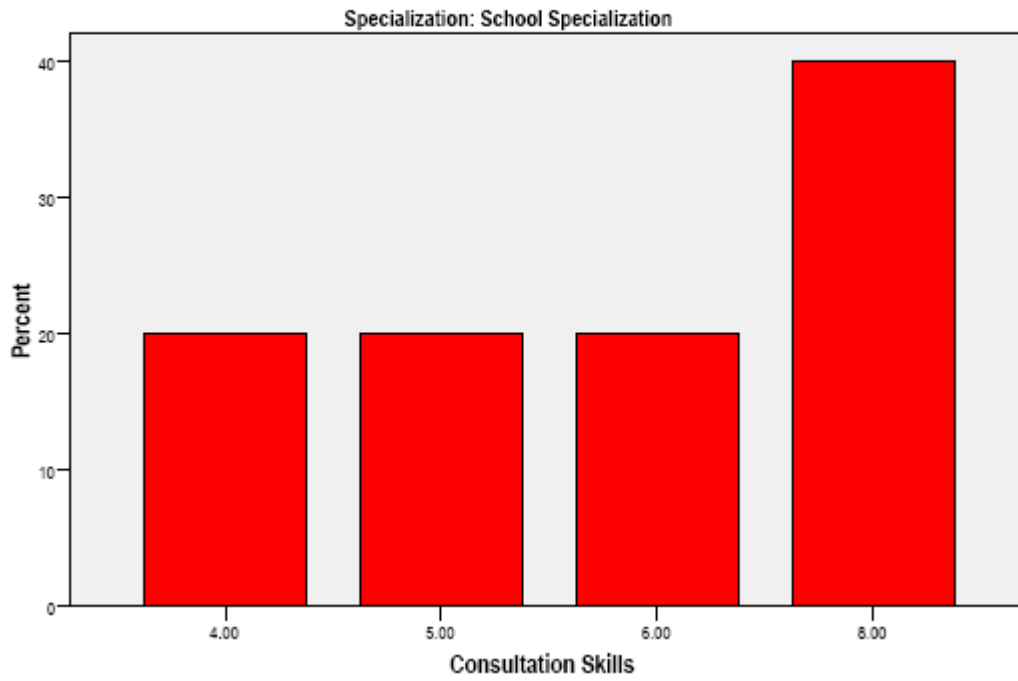
Professional Research and Writing



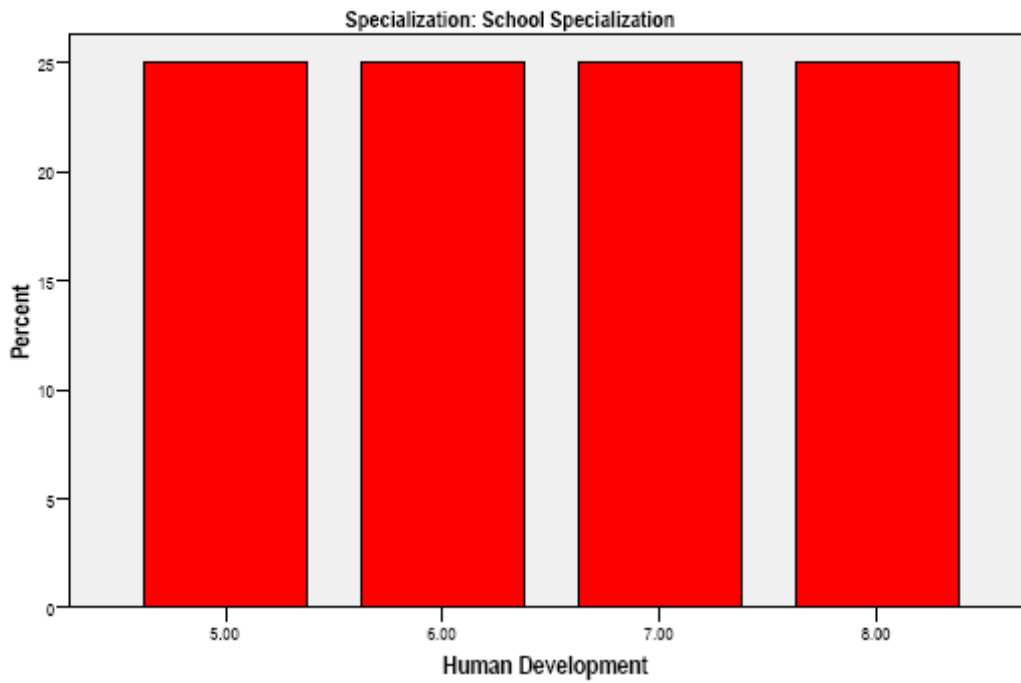
Program Evaluation



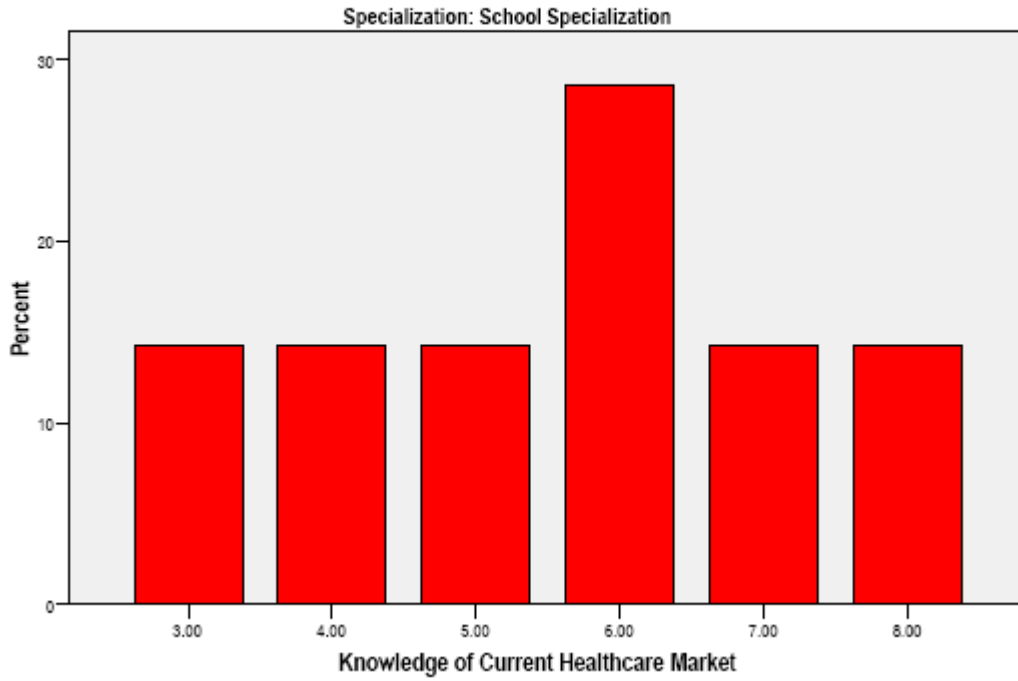
Consultation Skills



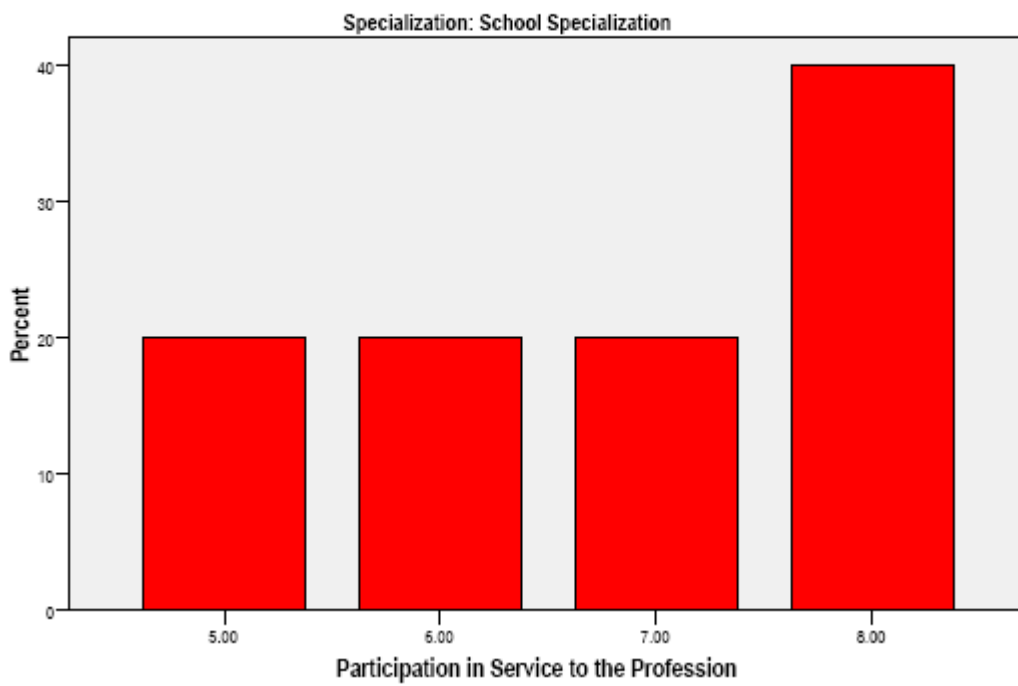
Human Development



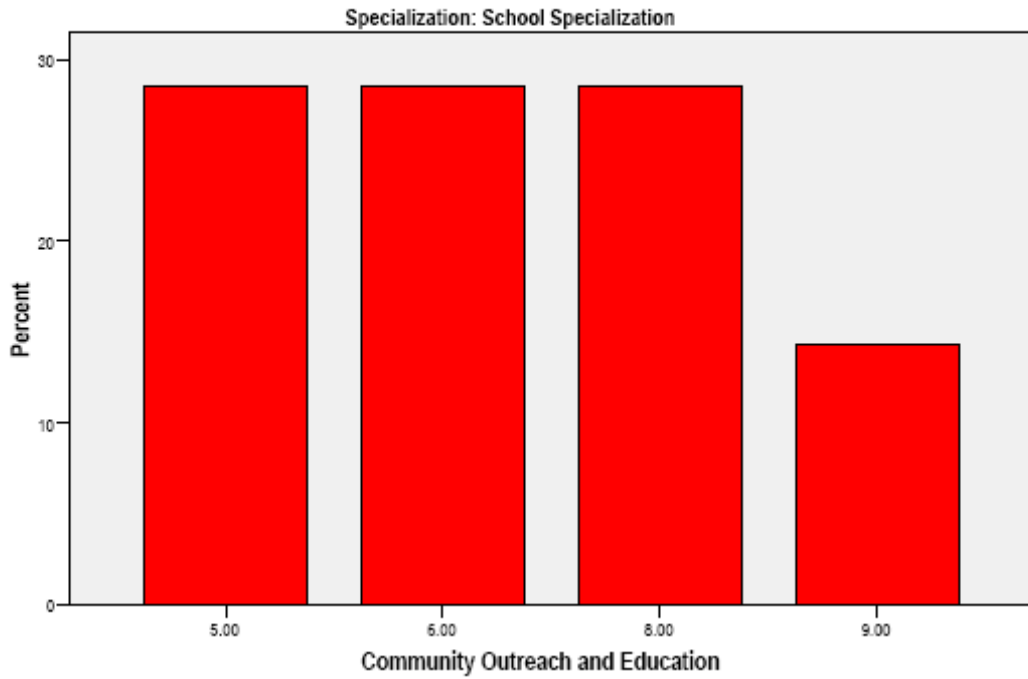
Knowledge of Current Healthcare Market



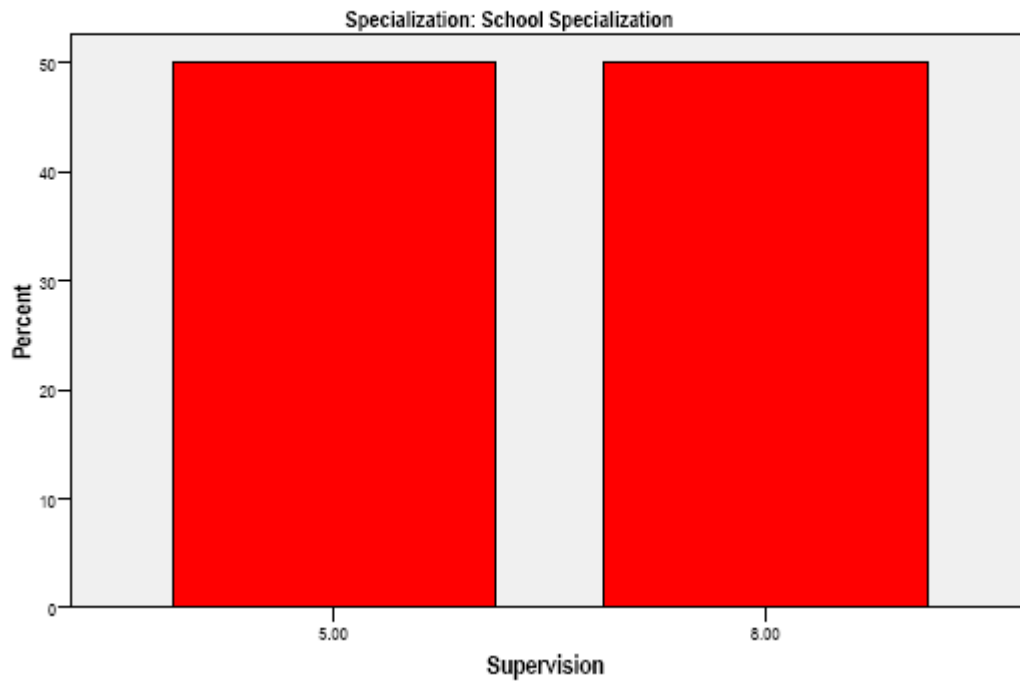
Participation in Service to the Profession



Community Outreach and Education



Supervision



Learning to Teach

